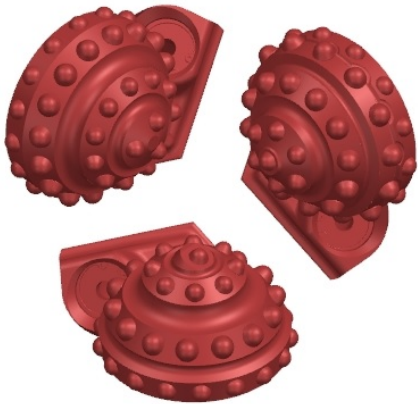


165,1 (6 1/2) TCNP625



Roller cone bit segments or set of segments can be used of various types of hole-openers. Rock bit hole-openers are used for hole-opening while drilling in different type formations with water or mud circulation.

SPECIFICATION

Diameter, mm (in)	165,1 (6 1/2)
IADC	625Y
Seal	O-Ring
Total number of inserts/teeth (inner/outer)	131 (85/46)
Total number of rows of inserts/teeth (inner/outer)	13 (10/3)
Number and diameter of nozzles*	3x11
Weight, kg	16

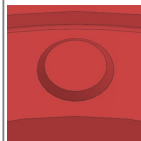
DESIGN FEATURES



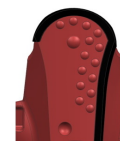
Sealed roller bearing with O-ring, rollers in large and small roller race. Provides high performance in a wide range of applications.



Chisel-shaped TCI are applied for cutting and chipping action and assure high ROP.



TCI on the cones gage are applied to calibrate the wellbore, protect cone body against erosion wear.



To protect leg body and prevent bit wear, shirrtail and leading edge are reinforced with TCI and additionally hardfaced.

* Standard specification may be changed on customer request.

** The specified ranges of WOB and RPM represent typical drilling modes, adherence to them will not necessarily result in optimal bit life or minimum drilling costs. It is not recommended to apply both WOB and RPM upper limits at once.

For the purpose of performance improvement, minor changes of the bit design may be introduced without prior customer notification.